



s.130 NPT stainless steel

1/4" - 4"
1000 PSI



Quality

- Dual sealing system allows valve to be operated in either direction making installation easier
- Handle clearly shows ball position
- Silicone-free lubricant on all seals
- Test standard API 598
- NACE compliance MR-01-75
- Handle stops on body to avoid stresses at stem

Body

- CF8M stainless steel body and cap

Stem

- Blowout-proof stainless steel stem

Sealing

- Glass filled PTFE seats

Threads

- NPT taper ANSI B.1.20.1 female by female threads

Flow

- 100% full port for maximum flow

Handle

- Plastic coated stainless steel lockable handle. Handle coating offers both thermal and electrical protection

- **WARNING:** do not exceed reasonable temperature and/or electrical load

Working pressure & temperature

- 1000 PSI non-shock cold working pressure
- 150 PSI WSP steam rating
- 2x 10⁻² torr vacuum rating
- *150 psig non-shock working steam pressure. Not suitable for throttling steam.
- -50°F to +450°F
- **WARNING:** freezing of the fluid in the installation may severely damage the valve

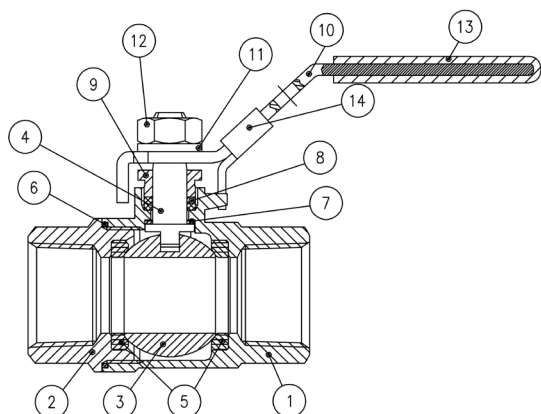
Upon request

- Oval lockable handle up to 2"

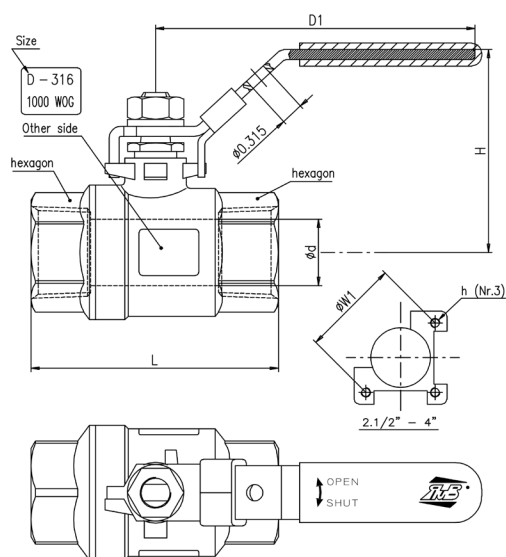
Approved by or in compliance with

- GOST-R (Russia)

NOTE: approvals apply to specific configurations/sizes only.



	Part description	Q.ty	Material
1	Body	1	A351-CF8M
2	Cap	1	A351-CF8M
3	Ball	1	A351-CF8M
4	Stem	1	A276 Gr. 316
5	Seat	2	PTFE +15% G/F
6	Gasket	1	PTFE
7	Thrust washer	1	PTFE
8	Packing	1	PTFE
9	Gland	1	A194 Gr.8
10	Lockable handle	1	A240 SS304
11	Lock washer	1	A493 SS304
12	Handle nut	1	A194 Gr.8
13	Handle sleeve	1	Vinyl grip
14	Locking plate	1	A240 SS304

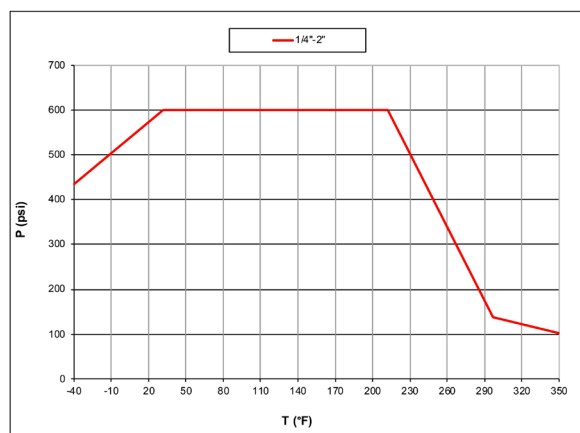


Code	130B41	130C41	130D41	130E41	130F41	130G41	130H41	130I41	130L41	130M41	130N41
D (Size)	1/4"	3/8"	1/2"	3/4"	1"	1 1/4"	1 1/2"	2"	2 1/2"	3"	4"
d (inch)	0.433	0.492	0.591	0.787	0.984	1.26	1.496	1.969	2.559	3.15	3.937
L (inch)	2.276	2.276	2.429	2.76	3.201	3.78	4.429	4.961	6.634	7.535	8.524
H (inch)	2.252	2.252	2.327	2.463	2.783	3	3.508	3.864	4.354	4.882	6.732
D1 (inch)	4.055	4.055	4.055	4.055	5	5	6.024	7.598	7.598	10.985	13.189
W1 (inch)	N/A	N/A	N/A	N/A	N/A	N/A	N/A	N/A	2.756	4.016	4.016
h	N/A	N/A	N/A	N/A	N/A	N/A	N/A	N/A	M8x1.25	M10x1.5	M10x1.5
Cv (GPM)	12	16	20	42	65	101	144	250	422	640	1000

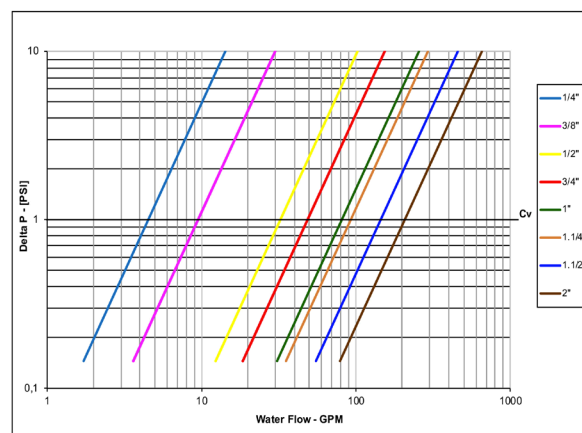
Water flow ratings

Size	1/4"	3/8"	1/2"	3/4"	1"	1 1/4"	1 1/2"	2"	2 1/2"	3"	4"
CV	12	16	20	42	65	101	144	250	422	640	1000

Pressure-temperature chart



Pressure drop chart



WARNING: This product can expose you to chemicals including lead which is known to the state of California to cause cancer and birth defects or other reproductive harm. For more information go to www.P65Warnings.ca.gov

XCE130 - 4266

RuB, Inc. - www.rubinc.com