



## s.90 NPT short

1/4" - 2"



### Quality

- 24h 100% seal test guaranteed
- Dual sealing system allows valve to be operated in either direction making installation easier
- No metal-to-metal moving parts
- No maintenance ever required
- Handle clearly shows ball position
- Chrome plated brass ball for longer life
- Handle stops on body to avoid stress at stem

### Body

- Hot forged full port sand blasted, unplated brass body and cap sealed with Loctite® or equivalent thread sealant

### Sealing

- PTFE self-lubricating seats with flexible-lip design

### Threads

- NPT short taper female by female threads



### Handle

- Geomet® carbon steel handle with thick PVC dip coating. Handle coating offers both thermal and electrical protection
- Handle removable with valve in service
- **WARNING:** do not exceed reasonable temperature and/or electrical load

### Stem

- Blowout-proof nickel plated brass stem
- Maintenance-free, double FPM O-rings at the stem for maximum safety

### Working pressure & temperature

- 600 PSI non-shock cold working pressure
- -40°F/+350°F
- **WARNING:** freezing of the fluid in the installation may severely damage the valve

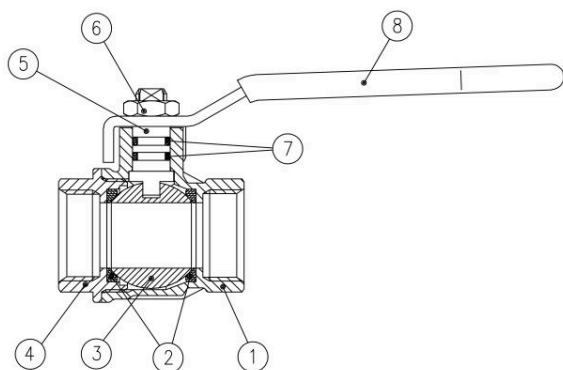
### Options

- Stem extension
- T-handle
- Oval lockable handle
- Stainless steel handle (1.4016 / AISI 430)
- Patented locking device
- Stubby handle
- **RuB** memory stop designed to be installed with our stubby handle

### Approved by or in compliance with

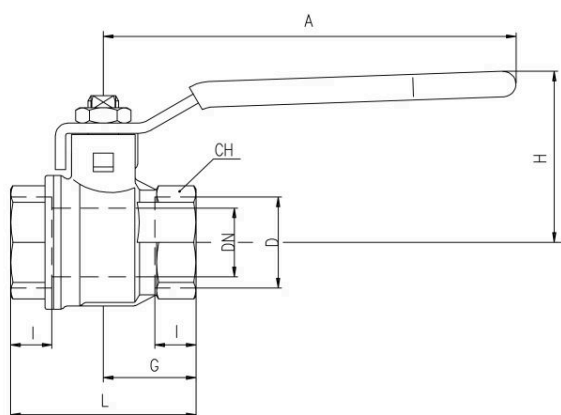
- GOST-R (Russia)
- RoHS Compliant (EU)

**NOTE:** approvals apply to specific configurations/sizes only.



	PART DESCRIPTION	Q.TY	MATERIAL
1	Unplated NPT body	1	CW617N
2	Seat	2	PTFE
3	Chrome plated ball	1	CW617N
4	Unplated NPT end-cap	1	CW617N
5	Nickel plated stem O-ring design	1	CW617N
6	Geomet® nut	1	CB4FF (EN10263-2)
7	O-Ring	2	FPM
8	Red PVC coated Geomet® steel handle	1	DD11 (EN10111)

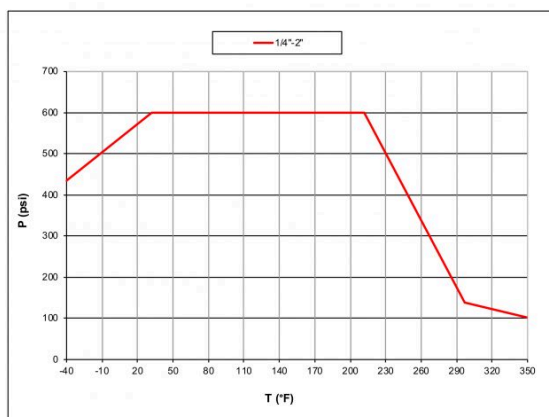
1.1/4"- 2" hollow ball



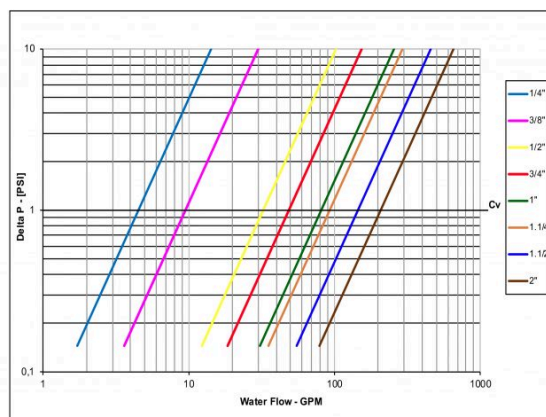
Code	S90B41	S90C41	S90D41	S90E41	S90F41	S90G41	S90H41	S90I41
D (inch)	1/4	3/8	1/2	3/4	1	1 1/4	1 1/2	2
DN(inch)	0.314	0.393	0.590	0.787	0.984	1.259	1.574	1.968
I (inch)	0.354	0.354	0.433	0.472	0.551	0.590	0.669	0.748
L (inch)	1.535	1.535	1.968	2.125	2.637	3.031	3.543	4.173
G (inch)	0.767	0.767	0.984	1.062	1.318	1.515	1.771	2.086
A (inch)	3.228	3.228	3.937	4.724	4.724	6.220	6.220	6.220
H (inch)	1.480	1.480	1.679	1.956	2.114	2.858	3.094	3.370
CH (inch)	0.787	0.787	0.984	1.220	1.496	1.889	2.125	2.598
Cv (GPM)	4.5	9.5	32.3	48.5	80.9	92.4	144.4	206.8

DN shows the nominal flow diameter. Actual flow diameter complies with full port DIN 3357 part 4.

Pressure-temperature chart



Pressure drop chart



Ask for additional information on the whole range of **RuB** products and consult with your supplier for special applications.  
For complete disclaimer: [www.rubinc.com/disclaimer](http://www.rubinc.com/disclaimer)