

ACCESSORIES





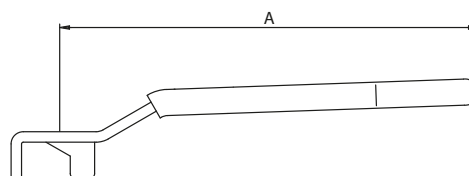
Accessories

to forged *RuB* ball valves

Geomet® carbon steel lever



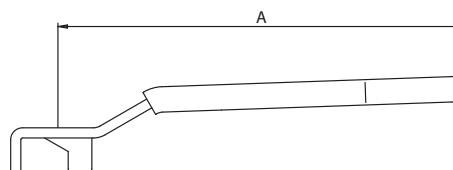
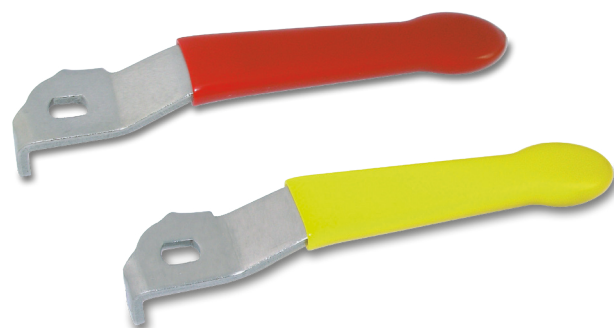
* PMFG20



Full port		1/4"-3/8"	1/2"	3/4-1"	1 ¼" - 2"	2 ½ - 4"
Standard port		1/4"-3/8"	1/2"-3/4"	1"-1 ¼"	1 ½"-2 ½"	3"- 4"
A (inch)		3.23	3.94	4.72	6.22	10.03
Red	Code	PLFR11	PLFR13	PLFR16	PLFR19	PMFR20
Yellow	Code	PLFG11	PLFG13	PLFG16	PLFG19	PMFG20
Black	Code	PLFN11	PLFN13	PLFN16	PLFN19	PMFN20
White	Code	PLFW11	PLFW13	PLFW16	PLFW19	PMFW20
Light Blue	Code	PLFA11	PLFA13	PLFA16	PLFA19	PMFA20
Green	Code	PLFV11	PLFV13	PLFV16	PLFV19	PMFV20

Description	Q.ty	Material
Geomet® plated steel handle	1	DD11 (EN10111)
Dipped coating	1	PVC

AISI 430 stainless steel lever

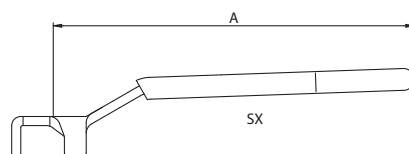


Full port	1/4"-3/8"	1/2"	3/4-1"	1 1/4"-2"
Standard port	1/4"-3/8"	1/2"-3/4"	1"-1 1/4"	1 1/2"-2 1/2"
A (inch)	3.23	3.94	4.72	6.22
Red Code	PLAR11	PLAR13	PLAR16	PLAR19
Yellow Code	PLAG11	PLAG13	PLAG16	PLAG19

Description	Q.ty	Material
Stainless steel handle	1	AISI 430
Dipped coating	1	PVC



Geomet® carbon steel left lever

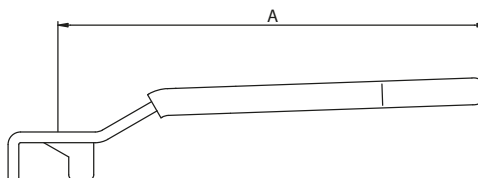


Description	Q.ty	Material
Geomet® plated steel handle	1	DD11 (EN10111)
Dipped coating	1	PVC

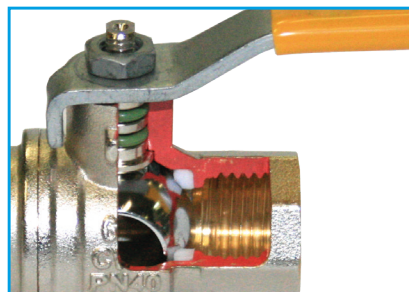
Full port	1/4"-3/8"	1/2"
Standard port	1/4"-3/8"	1/2"-3/4"
A (inch)	3.94	3.94
Black	Code	PLFN10
		PLFN10

The left handles are the solution where the valves are installed on a parallel piping system.

Geomet® carbon steel 90° reverse lever



Full port	1/2"	
Standard port	1/2"-3/4"	
A (inch)	3.94	
Yellow	Code	PLIG03
Light Blue	Code	PLIA03
Light Blue SX	Code	PLIA00



Description	Q.ty	Material
Geomet® plated steel handle	1	DD11 (EN10111)
Dipped coating	1	PVC

We have also reverse handle: in this version the handle is parallel to the pipe when the valve is closed and perpendicular when the valve is open. This option is available on demand only in the small size for valves up to 1/2" (or 3/4" for reduced bore)

Stem flats show actual ball position

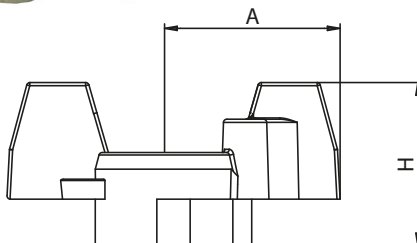
Aluminum - brass - Geomet® carbon steel T-handle



Corrosion is a big problem that many have to face when using valves in underground or outdoor installations, especially near sea, or when valves are used in swimming pools (chlorine), trucks or fire-fighting equipment.

Most people understand that brass components performance are quite high, while the problem with a ball valve may arise from a component you would have never thought about: the aluminum T-handle.

To benefit of brass resistance to corrosion, **RuB** has developed brass T-handles.



Full port	1/4"-3/8"	1/2"	3/4"-1"
Standard port	1/4"-3/8"	1/2"-3/4"	1"-1 1/4"
A (inch)	0.98	0.98	1.18
H (inch)	0.98	0.98	1.10
Red	Code PFAR03	PFAR03	PFAR06
Yellow	Code PFAG03	PFAG03	PFAG06
Light Blue	Code PFAB03	PFAB03	PFAB06
Green	Code PFAV03	PFAV03	PFAV06

Full port	1 1/4"-2"
Standard port	1 1/2"-2 1/2"
A (inch)	2.24
H (inch)	2.01
Red	Code PFFR09
Yellow	Code PFFG09
Light Blue	Code PFFA09
Green	Code PFFV09
Brass unplated	Code --
Brass nickel plated	Code --

Full port	1/4"-3/8"	1/2"	3/4"-1"
Standard port	1/4"-3/8"	1/2"-3/4"	1"-1 1/4"
A (inch)	0.98	0.98	1.18
H (inch)	0.98	0.98	1.10
Brass unplated	Code PFOG03	PFOG03	PFOG06
Brass nickel plated	Code PFON03	PFON03	PFON06

Description	Q.ty	Material
T-handle	1	EN AC- 46100

Description	Q.ty	Material
Geomet® plated steel T-handle	1	DD11 (EN10111)
Dipped coating	1	PVC

Description	Q.ty	Material
Unplated brass T-handle	1	CW617N
Nickel plated brass T-handle	1	CW617N

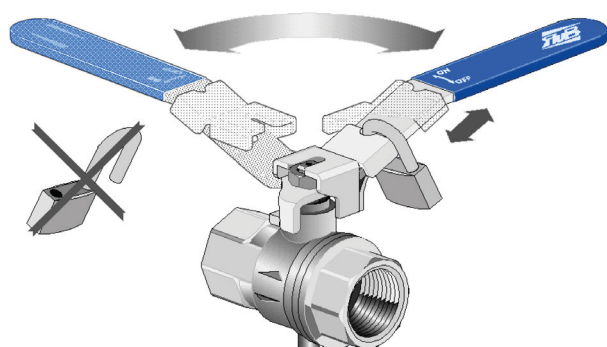


Patented lockable handle

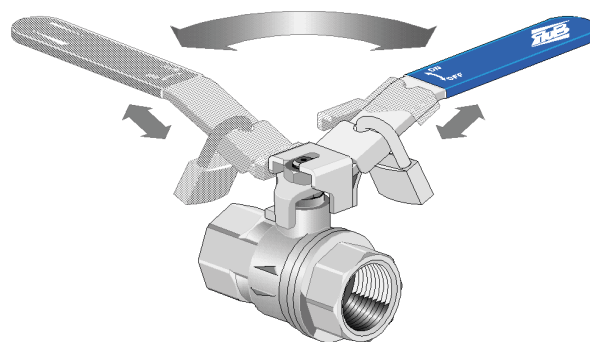
for **RuB** manual ball valves



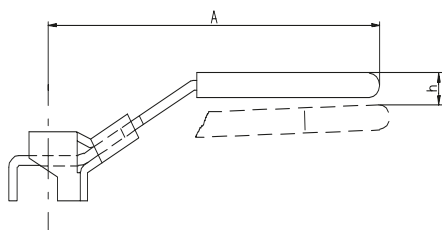
The **RuB** lockable handle is made of strong Geomet® carbon steel and designed to discourage tampering. The **RuB** locking device covers the top nut of the valve making padlock removal impossible without a key. Easy to install on valves in the field, the **RuB** lockable handle will lock s.93 **RuB** valves in closed position only in compliance with OSHA (USA) safety requirements, while other **RuB** valves can be locked in both the open and closed positions.



Lockable only in closed position when assembled on s.93 **RuB** range



Lockable in both open and closed positions when assemble on any other **RuB** range



Code	PBFA13	PBFA16	PBFA19	PBFA20
Full port	1/4"-3/8"-1/2"	3/4"- 1"	1 1/4"-1 1/2"-2"	2 1/2"-3"-4"
Reduced port	1/2"-3/4"	1"-1 1/4"	1 1/2"-2"-2 1/2"	3"-4"
A (inch)	3.78	4.61	6.16	9.84
h (inch)	0.33	0.37	0.16	0.31

Description	Q.ty	Material
Geomet® plated steel handle	1	DD11 (EN10111)
Dipped coating	1	PVC

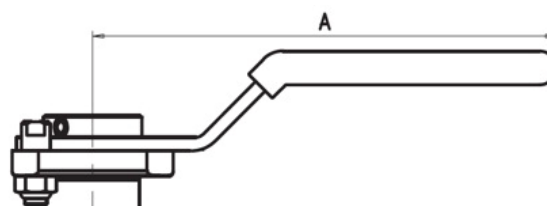
Dimension A shows handle length from center of stem; dimension h shows height of handle compared to standard handle assembled on valves. Two bottom lines show size of valve to fit wish each size of lockable handle. Use 9/32" size shackle padlock up to 2", and 5/16" over.

Lockable handle

for 3-way ball valves series s.76 (L-port) and s.64/T.264
with ISO5211 F03 flange

Flange Size	F03
A (inch)	4.05
Black	Code SLFD03

Description	Q.ty	Material
Geomet® plated steel handle	1	DD11 (EN10111)
Dipped coating	1	PVC
Stainless steel screw	1	AISI 304
Zinc plated steel nut	1	Class 8 (UNI7474)
Unplated stop	1	CW617N



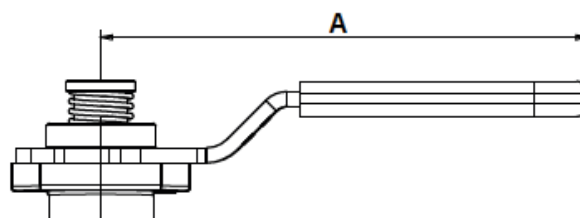
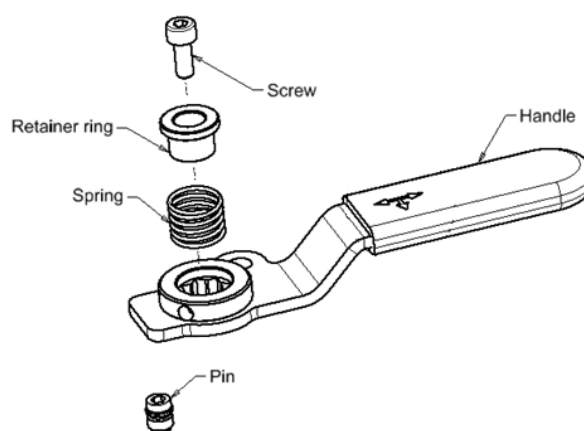
This kit easily converts an actuated valve to a manual one.
To lock valve in any position, use 5/32" (4mm) shackle padlock.

Lockable push & turn handle

for 3-way ball valves series s.73 (T-port)
with ISO5211 F03 flange

Flange Size	F03
A (inch)	4.05
Black	Code K73N13

Description	Q.ty	Material
Geomet® plated steel handle	1	DD11 (EN10111)
Dipped coating	1	PVC
Screw	1	AISI 304
Retainer ring	1	CW617N
Spring	1	AISI 302
Pin	1	CW617N



To lock valve in any position, use 5/32" (4mm) shackle padlock.



Oval lockable handle

for **RuB** manual ball valves

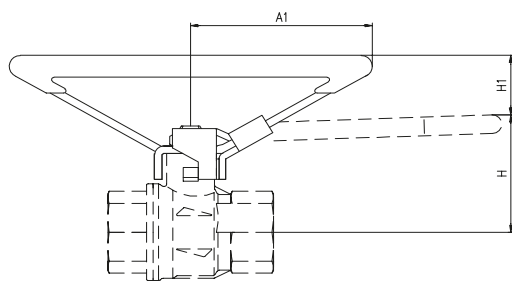


PATENTED

The **RuB** oval/round lockable handle is for service where there isn't enough space for levers or T-handles, or where lever handles might be moved unintentionally.

It is made of steady carbon steel and it features the patented **RuB** lockable device.

The **RuB** oval lockable handle is available for all sizes of forged **RuB** valves up to 2" and in round shape for sizes 2 ½" thru 4"; it is easy to install on valves in the field or you can simply order your **RuB** valves with this option.



Code	PBOA03		PBOA06	PBOA09	PBOA10
Size	1/4"-3/8"	1/2"	3/4"-1"	1 1/4"-1 1/2"-2"	2 1/2"-3"-4"
A1 (inch)	2.28	2.28	2.76	2.76	6.10
H1 (inch)	0.79	0.77	0.87	0.59	0.13

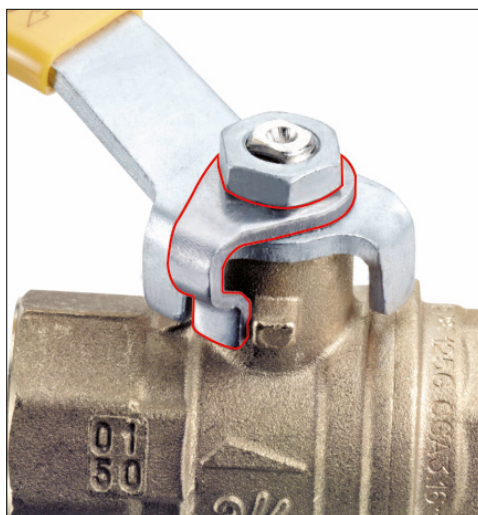
Size	1/4" - 2"	2 1/2" - 4"
Locker shackle	9/32"	5/16"

Description	Q.ty	Material
Geomet® plated steel handle	1	DD11 (EN10111)
Dipped coating	1	PVC

Dimension A1 shows handle dimension from centre of stem. Dimension H1 shows height of handle compared to standard handle assembled on valves.

Memory stop

Use together with **RuB** stubby handles with knurling

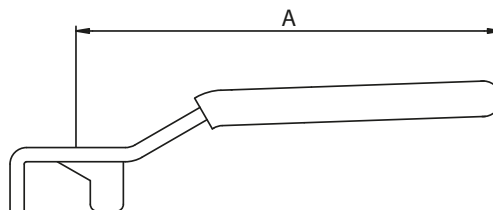


Full port valve	1/4"-3/8"	1/2"	3/4-1"	1 1/4"-2"
Standard port valve	1/4"-3/8"	1/2"-3/4"	1"-1 1/4"	1 1/2"-2 1/2"
Code	PPMA03	PPMA03	PPMA06	PPMA09

Description	Q.ty	Material
Geomet® plated steel memory stop	1	DD11 (EN10111)

Memory Stop allows to control flow passing through the valve by limiting ball movement from fully closed to a preset position. Installing a memory stop on a standard **RuB** valve is very easy and can be done even while valve is being used. Memory stops should be used only with **RuB** valves with O-Ring stem design.

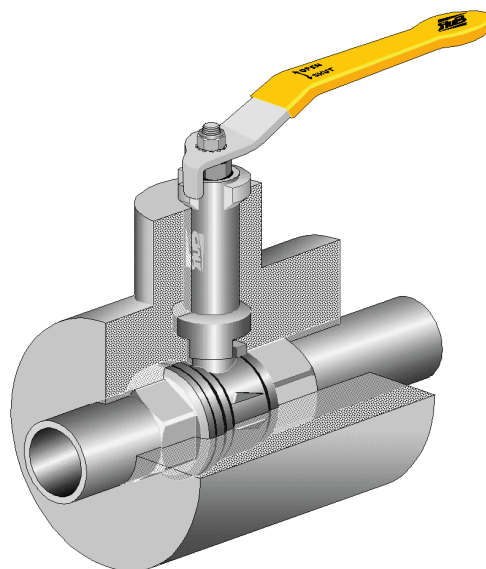
Geomet® carbon steel stubby handle

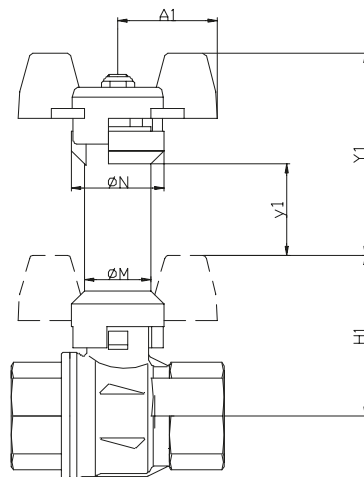
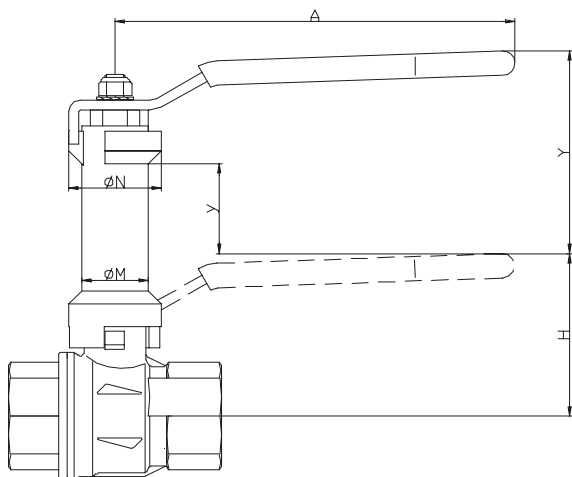


Full port valve	1/4"-3/8"	1/2"	3/4-1"	1 1/4"-2"
Standard port valve	1/4"-3/8"	1/2"-3/4"	1"-1 1/4"	1 1/2"-2 1/2"
A (inch)	1.77	1.77	3.54	3.94
Yellow Code	PLTG13	PLTG13	PLTG16	PLTG19

Description	Q.ty	Material
Geomet® plated steel handle	1	DD11 (EN10111)
Dipped coating	1	PVC

RuB levers are not only strong, but also long for easy maneuver. To solve space constraints issues, install our stubbies.

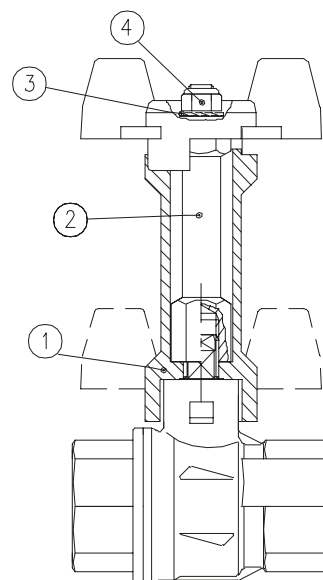
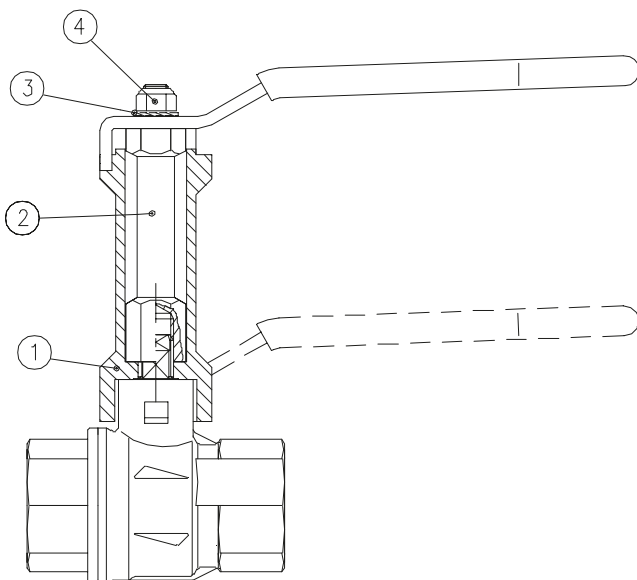




Dimensions Y, y, Y1 and y1 are additional to dimension H on the relevant valve drawing

Code	PPRO03	PPRO06	PPRO09
Full port valve	1/4"-3/8"	1/2"	3/4"-1"
Reduced port valve	1/2"-3/4"	1"-1 1/4"	1 1/2"-2"-2 1/2"
M (inch)	0.67	0.67	0.79
N (inch)	0.98	0.98	1.10
A (inch)	3.23	3.94	4.72
Y (inch)	2.22	2.22	2.46
y (inch)	1.04	1.04	1.08
A1 (inch)	0.98	0.98	1.18
Y1 (inch)	2.22	2.22	2.46
y1 (inch)	1.00	1.02	1.20

Note: Stem extensions should not be used on valves with packing gland designs due to regular required maintenance adjustments.



Item	Description	Q.ty	Material
1	Body	1	CW617N
2	Connection	1	CW617N
3	Tab washer	1	Steel
4	Self-locking nut	1	Steel

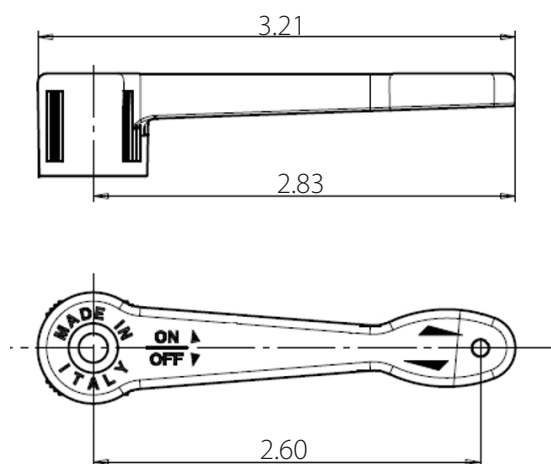


Accessories

to mini and micro ball valves

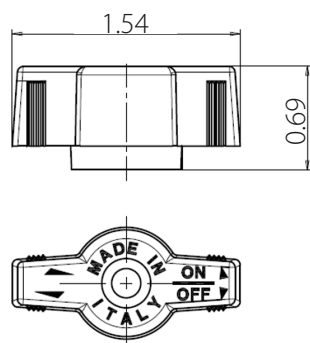
Nylon lever and T-handle

for s.34



Item No	Description	Colour
PLNB34	Blue nylon lever for s.34	RAL5017
PLNG34	Yellow nylon lever for s.34	RAL1028
PLNN34	Black nylon lever for s.34	RAL9005
PLNR34	Red nylon lever for s.34	RAL3000

Description	Q.ty	Material
Lever for s.34	1	Nylon glass filled 30%

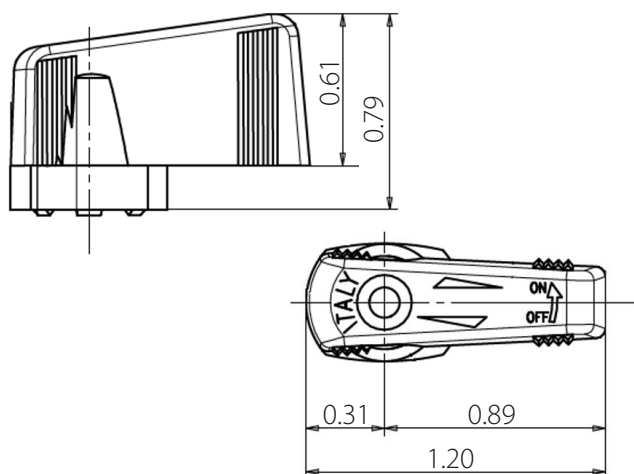


Item No	Description	Colour
PFNA34	Orange nylon T-handle for s.34	RAL2009
PFNB34	Blue nylon T-handle for s.34	RAL5017
PFNG34	Yellow nylon T-handle for s.34	RAL1028
PFNN34	Black nylon T-handle for s.34	RAL9005
PFNR34	Red nylon T-handle for s.34	RAL3000

Description	Q.ty	Material
T-handle for s.34	1	Nylon glass filled 30%

Nylon wedge handle

for s.35



Item No	Description	Colour
PLN35G	Yellow nylon wedge handle for s.35	RAL1028
PLN35N	Black nylon wedge handle for s.35	RAL9005
PLN35R	Red nylon wedge handle for s.35	RAL3000
PLN35V	Green nylon wedge handle for s.35	RAL6001
PLG35N (Upon request)	Grey Grivory® wedge handle for s.35	RAL7012

Description	Q.ty	Material
Wedge handle for s.35	1	Nylon glass filled 30%

Metal wedge handle

for s.35



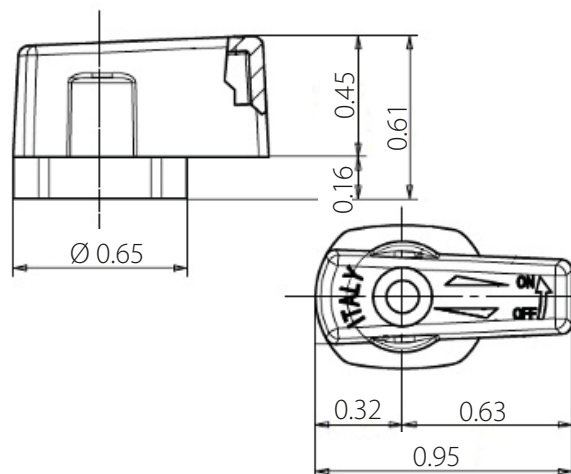
Colours	Yellow	Blue	Black	Red	Green	Chrome
Code	PLZ35G	PLZ35B	PLZ35N	PLZ35R	PLZ35V	PLZ35C

Description	Q.ty	Material
Metal wedge handle for s.35	1	ZAMA Z5

Thanks to the metal wedge handles mounted on s35 series, it's now possible to reach working temperatures up to 120°C (250°F). The metal wedge handles are available in red, black, yellow, green, light blue and chrome plated. Same dimensions as nylon wedge handle.

Nylon wedge handle

for s.39 micro



Item No	Description	Colour
PLN39N	Black nylon wedge handle for s.39	RAL9005

Description	Q.ty	Material
Wedge handle for s.39	1	Nylon glass filled 30%

XCEACCU - 4253