



VALVES & ACTUATORS



**About
us**

**Products
& Services**

**Production
& Quality**

ABOUT US

RUB, Inc. is the North American headquarters for **RUB** brass shut-off valves and actuators. Our new facility, built in 2014 in Shakopee, MN, features a 50,000 sq. ft. warehouse with 5-tier racking and state of the art wireless inventory management system controlled by an SAP ERP system.

VISION
MISSION
and VALUES

PEOPLE

PRODUCTION
SITE

BUSINESS
CODE





Corporate Headquarters is a manufacturer of high quality shut-off brass valves and actuators for a variety of applications, as well as engineered custom products.

The family, strongly supports the healthy growth of the group with heavy investments in new technology for machining, assembly and logistics, an expansion of the manufacturing site, major upgrade of interconnectivity among equipment and ERP systems, employee motivational and carrier planning programs, improved customer support and stronger R&D and engineering professionalism.





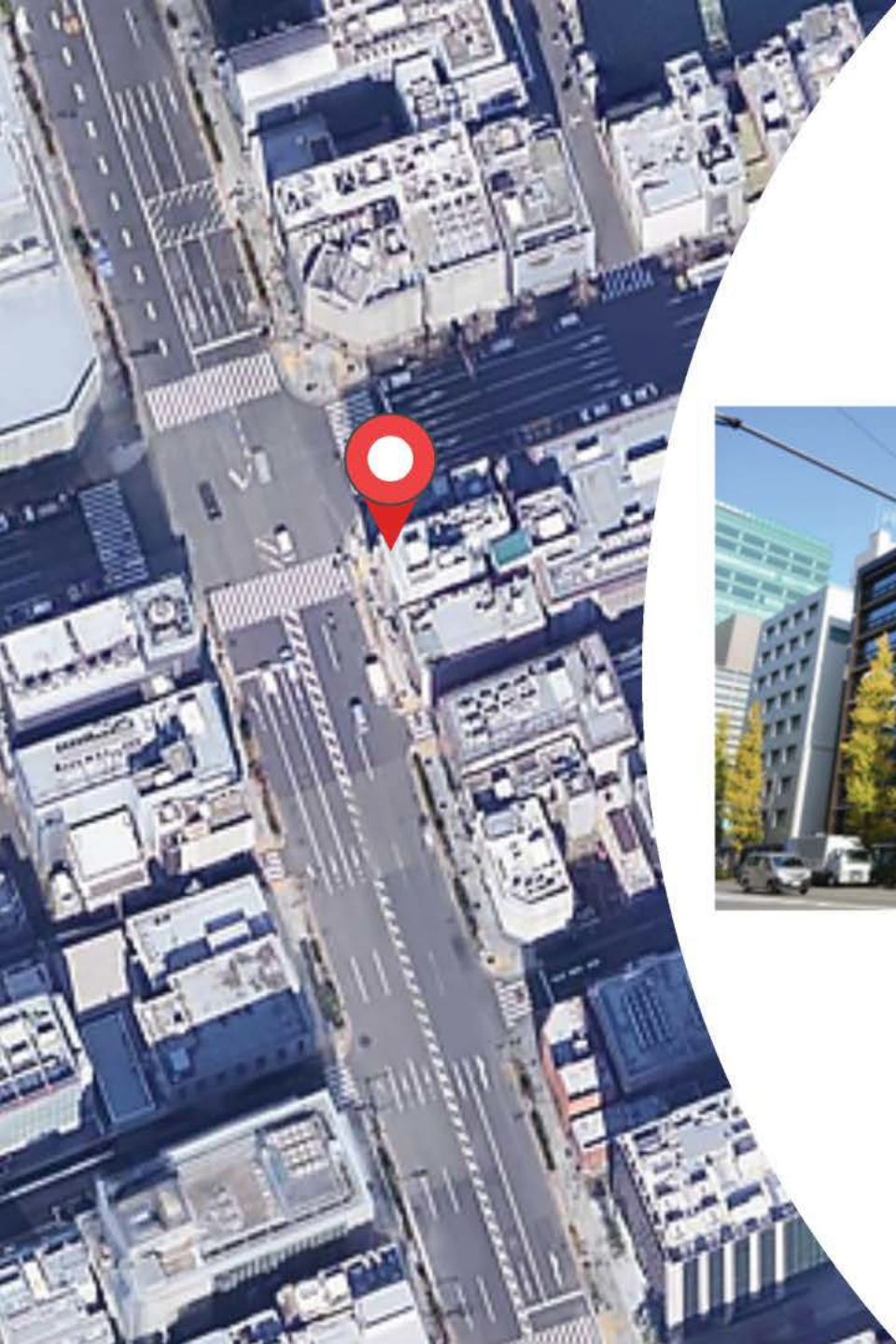
All brass ball valves are 100% manufactured in Italy at our plant in Brescia. We are a family owned company that has been expanding our global presence and high-quality reputation as a premier ball valve manufacturer for over 65 years exceeding customer expectations in quality, service and reliability.

Our manufacturing operation is highly automated and every product is tested according to the most rigorous standards before leaving the production plant, such as our 100% 24-hour dual seal test, and then shipped to **RUB, Inc.** in Shakopee, MN, USA, to serve the North American markets.

We offer forged brass ball valves from 1/8" to 4" in both standard and custom configurations for Oil, Water, Gas, and Industrial applications. We also stock stainless steel ball valves up to 8" and a complete actuation line for all of our actuatable brass and stainless-steel products.

All standard **RUB** branded Italian made brass ball valves have a limited lifetime warranty from defects in material and workmanship. For other products, we offer a 2-year limited warranty from the product date code.





RuB kk is the Japanese subsidiary of **BONOMI INDUSTRIES**, established in April 2007 with the aim of providing Japanese customers with local support, highest-quality service and reinforce the cooperation with the main market players.

RuB kk operates as an efficient distribution hub, thanks to a lean structure and a local warehouse located in Tokyo.





Vision

We are a Family Company **innovating** the Fluid Control market with products that **guarantee** you peace of mind for life.

Mission

We innovate Fluid Control to safeguard **People** and the **Planet**. Anytime, anywhere.

Values

Focus on the Future
Collaboration
Customer Orientation
Proactivity
Respect and Responsibility





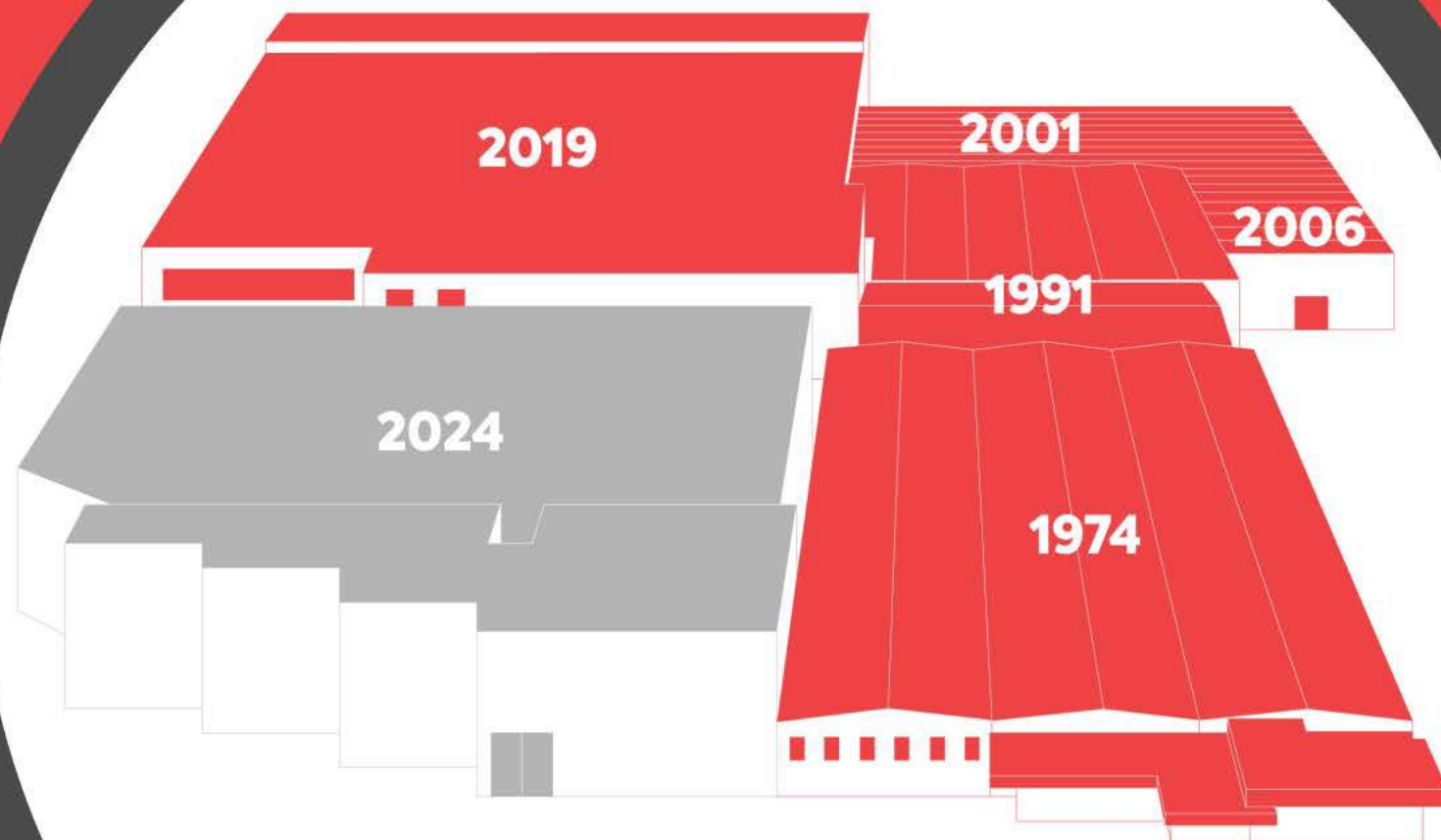
People with strong experience within each specific department and constantly trained, are the **roots of our company**.

In **RUB, Inc.** we all embrace a LEAN approach to work in the most straightforward way. We believe best solutions are made of simple ideas.



Our plant expansions in
Mazzano (Brescia, Italy):

from initial **5.000 m²**
to **20.000 m²**



RUB, Inc., supported by decades of history and experience, international growth, financial strength, competence and employees' professionalism, renews its commitment as follows:



THE CUSTOMER

We all, as a company, set our primary goal at exceeding customer's expectations.



THE INDIVIDUALS

We guarantee the full respect of international laws and those of the countries where we operate. We value the importance of being a Family Company with long term goals. We care for the environment and protect our Planet resources with quality products and technological manufacturing processes.



OUR VALUES

Innovation is a state of mind. One can't keep doing the same things and hope to improve. Innovations and improvements bear risks and stress, but strong individuals ponder the former and bear the latter.



INNOVATION

We all, collectively, respect all individuals, support them to reach their goals and work diligently to provide a healthy and safe work environment.



PRODUCTS & SERVICES

VALVES

ACTUATORS

OEM

Your logo is here



RUB VALVES

Valves and components from 1/8" to 4";

Full pass, reduced pass;

Connection variety: DIN 2999, ISO 228, ISO 7/1, BS.21, ANSI

B.1.20.1, AS 1722, JIS threads, weld or press connections;

Different control knobs: lever, butterfly, padlockable, square;

A complete line in CR brass or low lead brass is also available; Customized solutions and special products, responding to specific customer requirements.

- **Silicone-free;**
- **Product traceability;**
- **Lifetime warranty;**
- **100% Made in Italy;**



APPLICATIONS



**WHY CHOOSE
RUB VALVES**



OUR APPLICATIONS



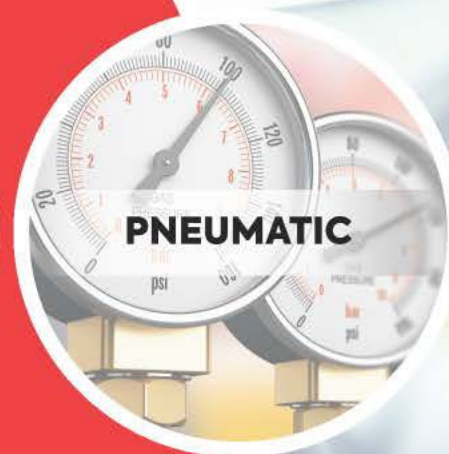
ACTUATION



INDUSTRY



GAS



PNEUMATIC



DRINKING WATER



PLUMBING



FIREFIGHTING





ACTUATION

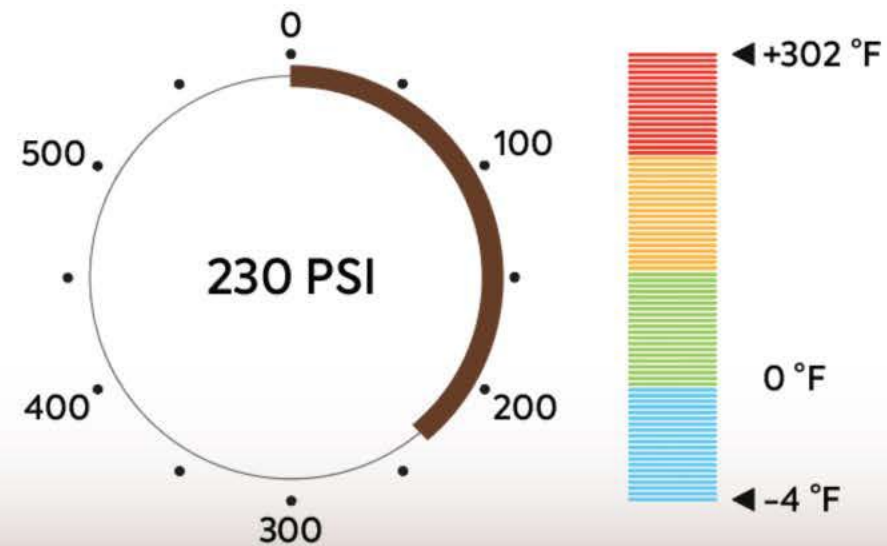
- Pneumatic Actuators
- Electric Actuators

VISIT
[OUR
WEBSITE](#)

s.6541 NPT 1/2" - 1 1/4"



- NPT threads
- 100% Full flow
- FF
- ISO 5211 actuation flange
- manual lockable handle option



s.6439 NPT



s.6439LT NPT



s.6441 NPT



s.7341 NPT



s.7641 NPT



s.134 NPT





INDUSTRY

- Industrial filtration
- Water treatment facilities
- Food service industries
- Pneumatic control and power lines
- Chemical plants
- Refinery
- Pharmaceutical Industry

Manufacturers of:

- Commercial boilers
- HVAC heating
- Food industry
- Radiant heating
- Steam to cooking vessels
- Industrial steam
- Power generation

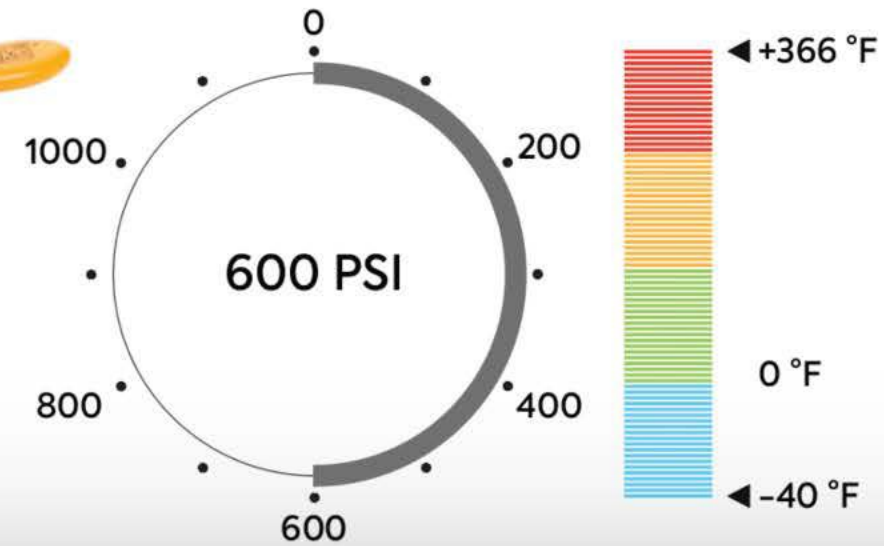
VISIT
OUR
[WEBSITE](#)

s.92 NPT SS TRIM

1/4" - 2"



- NPT threads
- 100% Full flow
- FF
- Adjustable packing gland
- Various handle options



s.84 BSPT
bsi.



k.84 BSPP
bsi.



s.7341L



s.7641L



s.92
barrel drain



s.92S NPT
solid ball



s.95 NPT
spring return



SNI7352



s.130 NPT



s.131 NPT



s.132 NPT



s.135



s.136





GAS

- Boilers
- Burners
- HVAC heating systems
- Water heaters
- Municipal commercial/residential gas metering
- Refineries
- Refinery gases (methane, ethane, propane, butane)
- Chemical plant feedstocks
- Pharmaceutical gas feedstocks
- Any service gas in manufacturing that is non-corrosive

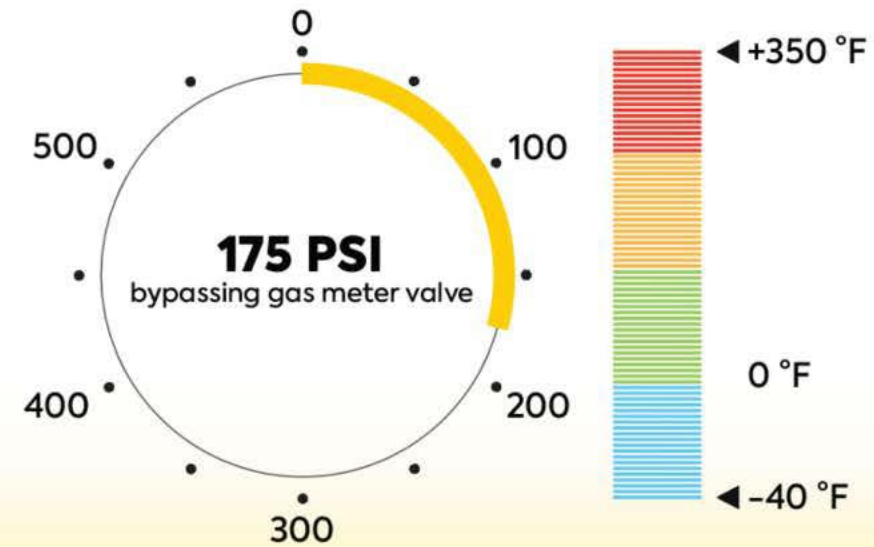
VISIT
OUR
[WEBSITE](#)

s.80 NPT surepass

3/4" - 1"



- NPT threads
- 100% Full flow
- Female by dielectric union female
- Double FPM O-ring
- Dielectric union end long or short pattern



s.80 NPT



**s.8043 NPT
dielectric**



s.8042 NPT



s.82 NPT



s.92 NPT



s.92 NPT M/F



s.95 NPT



**s.95 NPT
nickel plated**



**s.195 flare
solder ends**



s.195 NPT





PNEUMATIC

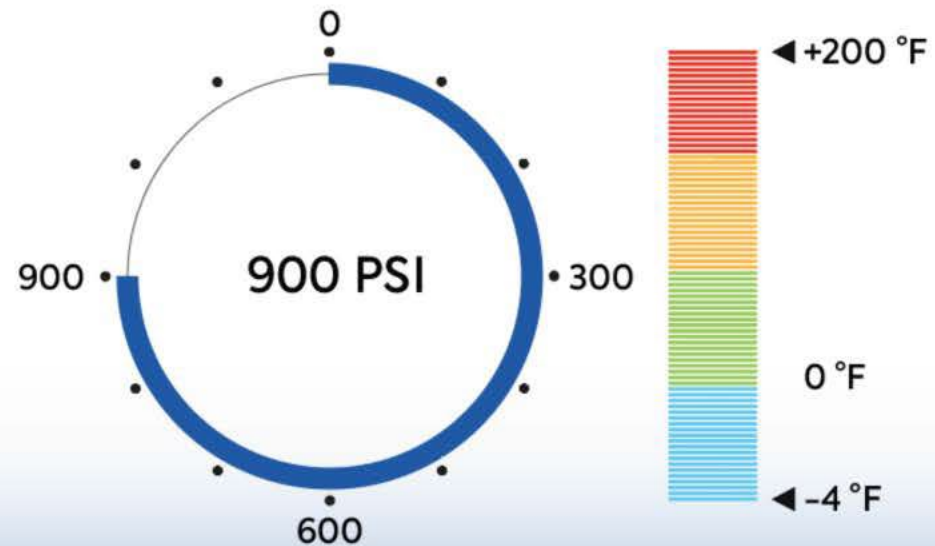
- Compressor lines
- Air to boilers
- Air to burners
- Pneumatic control and power lines
- Air in manufacturing/chemical plants

VISIT
OUR
[WEBSITE](#)

s.39 NPT forged micro 1/8" - 1/4"



- Micro
- NPT threads
- reduced flow
- FF / MF
- nylon lever



s.34 NPT



s.35 high pressure NPT



s.93 NPT
downstream exhaust





DRINKING WATER

- Drinking fountains
- Bottled water
- Water treatment facilities
- Residential water delivery
- Food service industries
- Plumbing
- Coffee machines

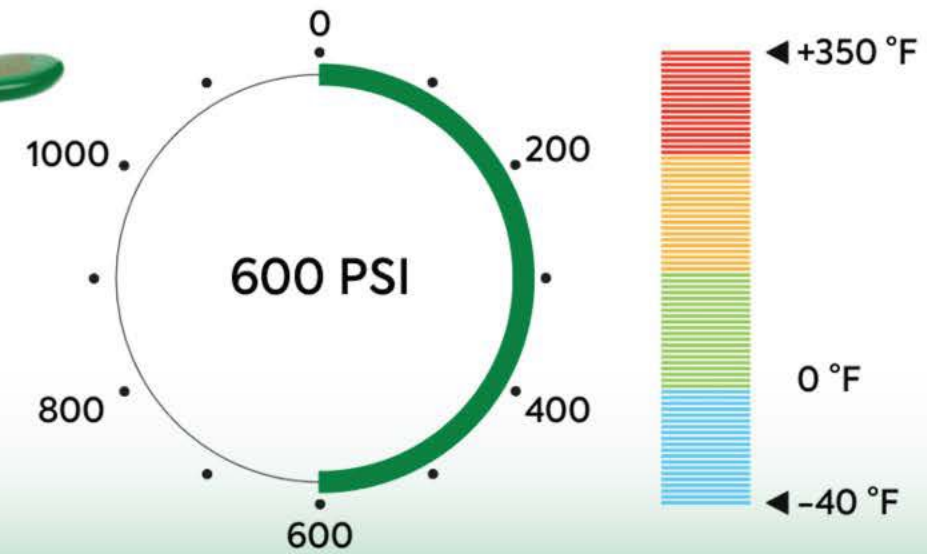
VISIT
[OUR](#)
[WEBSITE](#)

Puri-T 292 NPT

1/4" - 2"



- NPT threads
- 100% Full flow
- FF
- Lead free brass
- Various handle options



s.468LF DZR



Puri T-264



Puri T-242





PLUMBING

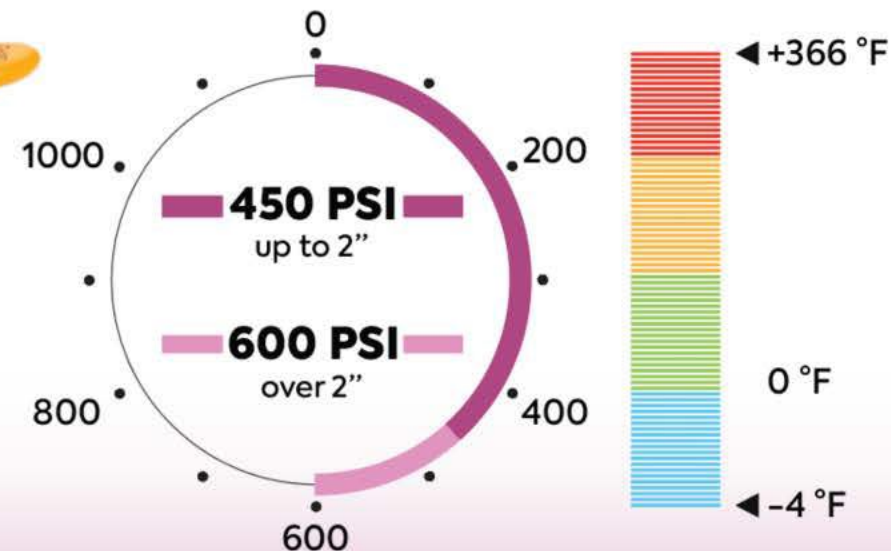
- Low power boilers
- Water wells
- Watering
- Sprinkler/fire control
- Hotel maintenance
- Hydronics/radiant heat

VISIT
[OUR](#)
[WEBSITE](#)

s.42
1/2" - 3"



- Solder end connections
- 100% Full flow
- FF
- Adjustable packing gland
- Various handle options



s.71 NPT



s.90 NPT short



s.112 NPT



s.123 NPT



s.126M NPT



s.114 NPT





FIREFIGHTING

- Drain valves for Sprinkler system
- Quick opening motorized valves for tunnel fire-fighting automatic system
- Pneumatic operated valves for fire-fighting trucks and pumps
- Valves for Fire-fighting reels with special short lever
- Lever-operated Valves with locking device or limit switches

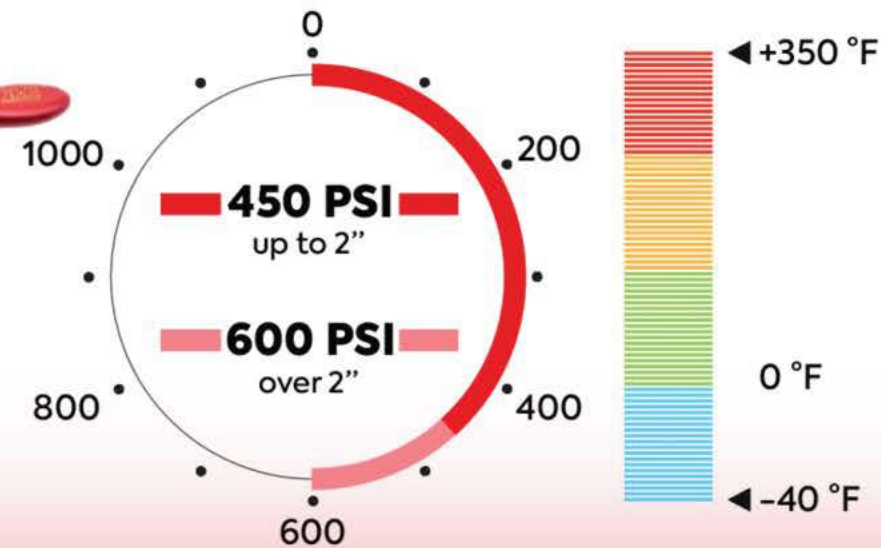
VISIT
[OUR](#)
[WEBSITE](#)

s.95 NPT

1/4" - 4"



- NPT threads
- 100% Full flow
- FF, MF
- Double FPM O-ring
- Various handle options



s.92 NPT M/F
c UL US RoHS PG FM APPROVED SP US



s.92S NPT solid ball
SP US RoHS PG FM APPROVED TSSA c UL US



s.95 NPT nickel plated
c UL US RoHS PG FM APPROVED SP US



s.95 NPT spring return
PG c UL US SP US RoHS FM APPROVED



s.84 BSPT
bsi. RoHS FM APPROVED CE



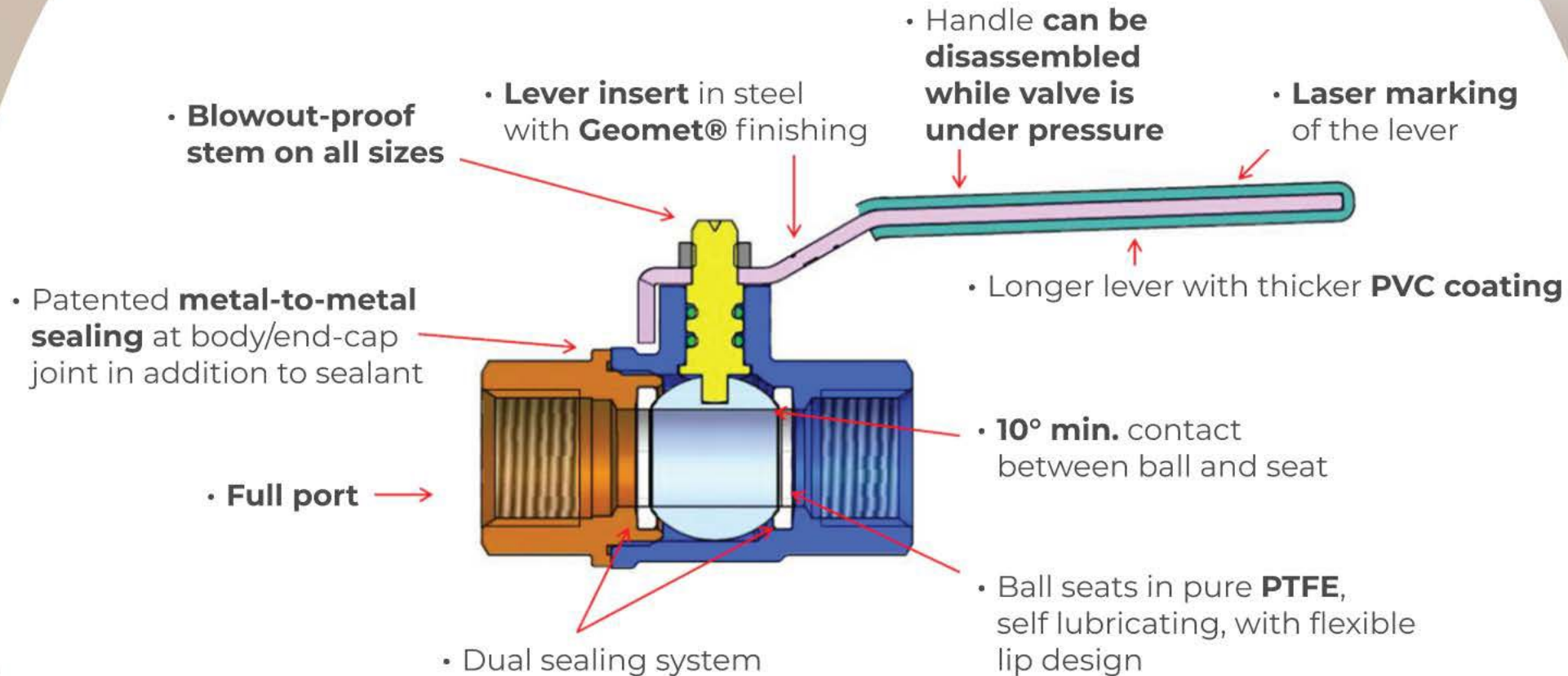
s.64 + EA



s.64 + CT



WHY CHOOSE **RuB** VALVES



• **SILICONE-FREE!**

• **LIFETIME WARRANTY!**

ACTUATORS

Electric Actuators



CH



CT



CP

Pneumatic Actuators



EA



CH Actuators

Compact High Torque
50 – 400 Nm
443 lb – in



- Direct Mounting ISO 5211
- Voltage range: 24 vac/vdc - 110/230 vac
- Dome position indicator
- Limit switches
- Manual override
- IP67 (fully weatherproof)
- 2P or 3P or Modulating controlling
- Options: Fail mode (Supercapacitors)





CP Actuators

Compact Power
8Nm
71 lb-in

- Compact and light package to fit in restricted spaces.
- Easy-to-assembly with valves with 5211 top flanges by means of an adaptor
- Voltage range:
 - 220-240V AC 50/60Hz
 - 110-120V AC 50/60Hz;
 - 24V AC 50-60Hz;
 - 24V DC / AC 50-60Hz;
 - 3.5÷12 V DC; 12 V DC; 24V DC;
- Motor power consumption only during operation:
 - DC and DC/AC: 5.5W;
 - AC: 8W
- 2P or 3P controlling
- Over 100.000 cycle life tests made
- IP 65 – Nema 4x
- Suitable even for 1/4" valves (and above)
- Visual position indicator
- Micro limit-switches and feedback signal

EA Actuators



- Aluminium Body/Pistons
- Rack and pinion mechanism: compact design
- ISO 5211 and Namur Interface: easy-to-install and fast-to-install
- Springs kits: versatile and easy to adjust spring torques
- Long lifetime
- Low maintenance cost
- Heavy-duty cycles

CT Actuators

C-TORK
8 – 40 Nm
70 – 354 lb-in



- Compact package with perfect shaft alignment
- Direct Mounting ISO 5211
- Voltage range: (24v – 48v – 110v – 230v - 50/60hz – Vac/Vdc)
- Visual position indicator & manual-override
- IP 54 (CT1) and IP 67 (CT2-3-4)
- Limit Switches and feedback signal
- 2P or 3P or Modulating controlling
- Option: ModBus; fast version (1" or 4"); internal heater (anti-condenser); fail mode (super capacitors).

CUSTOMIZATION

- R&D - Development of 100% customized products
- Product customization (handle marking);
- Closed cycle management of special projects to protect confidentiality;
- Packaging customization (label wording, customer bar code)





OEM

R&D department to develop special products based on specific requests.

- A value proposition that meets previously unmet needs Exceed customer's expectations
- An offering that yields superior performance Identify configurations that help customers achieve their goals
- Design organizational models to create a win to win situation



OEMs

Original Equipment Manufacturers (OEM) find in **BONOMI INDUSTRIES**:

- Professional expertise, loyalty and ethic
- Quality and reliability
- Specialization
- Financially sound partner
- Large volume capacity
- Flexibility
- Long term commitment

Customers

- Boilers manufacturers
- Burners manufacturers
- LPG Gas tank and systems manufacturers
- Radiators and heat exchangers manufacturers
- Manufacturers of watering systems
- Manufacturers of fire protection systems
- Manufacturers of refrigeration systems
- HVAC manufacturers
- Shipbuilds
- Filtration industry
- Compressors manufacturers
- Tank manufacturers
- Machine tool manufacturers



QUALITY CONTROL

We are very proud of our 100% made in Italy shut-off brass valves, actuation and OEM engineered product manufactured in our **ISO 9001:2015, ISO 45001:2018 and ISO 14001:2018** certified Corporate Headquarters in Brescia, Italy.

We implemented this rigorous quality management and assurance system since 1995 monitored by Lloyd's Register, helping us improve quality and reliability.

Besides Lloyd's and PED compliance, we offer a verified package of quality assurance based on testing services, state of art technology and approvals released by main laboratories and quality agencies from all over the world.



OUR
CERTIFICATIONS

OUR
VOLUMES

OUR TESTS

OUR
PRODUCTION

OUR
CAPABILITIES






APPROVALS

OUR CERTIFICATIONS

	Deutsche Vereinigung des Gas und Wasserfaches e.V. Technisch-wissenschaftlicher Verein			Система сертификации ГОСТ Р Госстандарт России	
	Deutsche Vereinigung des Gas und Wasserfaches			The Australian Gas Association	
	Deutsche Vereinigung des Gas und Wasserfaches Hygiene			OSHA Compliant	
	Schweizerischer Verein des Gas und Wasserfaches			Factory Mutual Research Corporation	
	Attestation de Conformité Sanitaire			Underwriter Laboratories Inc.	
	ARGB-KVBG			CRN-TSSA	
	Water Regulations Advisory Scheme			CSA International for Drinking Water to NSF/ANSI 61- NSF/ANSI 372	
	British Standards Institution			CSA - Canadian Standards Association	
	Kiwa KUKreg4			KSFD -Kuwait Fire Service Directorate	
	Ri.se. / Boverket			LIA - LP Gas Instruments Inspections Association	
	Kiwa - Swedcert			General Directorate of Civil Defence	

COMPLIANCES

	ROHS	
	Reach declaration	Reach
	PED 2014/68/UE by ICIM (0425)	PED
	Декларация соответствия	EAC





OUR VOLUMES

over 3.000 finished products

over 60 Mln components produced per year

8 Mln brass valves produced per year

over 7.000 components

270.000 parts produced per year

7.300 pallets stored



OUR TESTS



Automatic testing throughout the whole process



Seal tests on each valve*



Hours seal test on each valve*



Statistical in-line inspections of all components



Tests performed every day in production



Cycles zero-leakage life-test, along with four times burst-test, are part of our validation program

*applies to most products



OUR PRODUCTION

Transfer Machines,
specifically designed for
forgings from 1/8" to 4" size

CNC lathes and drilling machines

Multi-spindle bar cutting machines

Transfer machines for bars

Custom-made valve balls cutting
and polishing machines

Flexible assembly and testing lines

Automatic assembly machines
1/8" through 4"

Automatic and self-calibrating
in-line testing equipment

In-house tool production

Packaging Line

Wireless integrated system for
management of goods storage,
batch traceability, realtime
up-to-date information
on parts inventory



Our external processes:

Brass bars production

Forging

Surface treatments

Seals and O-rings

Levers and other operating devices

OUR CAPABILITIES



6-spindle and 8-spindle lathe machines with automatic loaders



Transfer machines for forgings with automatic loaders



Multi-spindle bar cutting machines



Transfer machines for bars



Automatic valve assembly and testing equipment 1/8" thru 4"



Automatic handle assembly and testing equipment



Packaging line



Flexible assembly and testing line



Robotized balls machining with diamond ultra finish



Miscellaneous equipment to produce internal tools and prototypes



All equipment is subject to maintenance program



Production
Inline, s



Logistic
Use of bar co
stages of pro
quantity veri



Alloys
Traditional
leadfree b
dezincifica



Sub
Steel
forg
all s

OUR CAPABILITIES



Production

Inline, self-calibrating tests

FMEA

Available upon request PPAP



Logistic

Use of bar code through-out all stages of production and multiple quantity verifications

Dimensions

5,5 mm thru 100 mm



Alloys

Traditional brass, low lead brass, leadfree brass, aluminum, dezincification-resistant brass

Seal test

Air test, by automated equipment
100% automated air-leak test



Subcontract

Steel plates, plating, forging, plastics, elastomers, all sourced locally

Assembly

100% in-line inspection of all components





THANK YOU

FOR YOUR ATTENTION

RuB, Inc.

4401 Dean Lakes Blvd. - Shakopee, MN 55379-2715 (USA)

T +1 (952) 857 1114

info@rubinc.com

www.rubinc.com

