

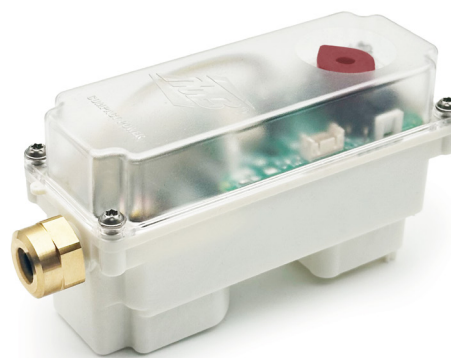


COMPACT POWER

Electric actuator

The CP series Electric actuator provide an output torque to suit up to 1" valves, and it is available in AC and DC voltage.

Compact package to fit in restricted spaces. The CP series has an ISO 5211 mounting interface for direct assembly.



QUALITY

- Bidirectional motor
- DC brushless motor
- Over 100.000 cycle life tests made
- Duty cycle 60%
- Direct mount on valve for perfect shaft alignment
- Positive orientation between ball valve and actuator
- Actuator easily removable for manual operating by screwdriver (s.31)
- Visual position indicator
- Standard power cable length: 0,8 m (31")
- Micro-switches can pass up to 1A

BODY

- Corrosion resistant PC plastic housing
- The gearbox structure is made of steel

WORKING TEMPERATURE

- -20°C (-4°F) to +80°C (+180°F)*

*UL approval up to +70°C (+160°F)

UPON REQUEST

- DC models with negative command
- Custom cable length
- Terminal with connector

APPROVED BY OR IN COMPLIANCE WITH

- UL-listed Class XABE/XABE7
- IEC/CE:
 - Low voltage directive (LVD) 2014/35/EU
 - Electromagnetic Compatibility Directive (EMCD) 2014/30/EU
 - IEC/EN 60730-1 Automatic electrical controls for household and similar use - Part 1: General requirements
 - IEC/EN 60730-2-14 Automatic electrical controls for household and similar use - Part 2-14: Particular requirements for electric actuators
- IEC 60529: IP65 degrees
- ANSI/NEMA 250: Enclosures for Electrical Equipment NEMA 4X
- IEC/EN 60730-1: IEC Electric Protection Class
- 110VAC e 220VAC: Class 2 (II)
- Other voltage: Class 3 (III)

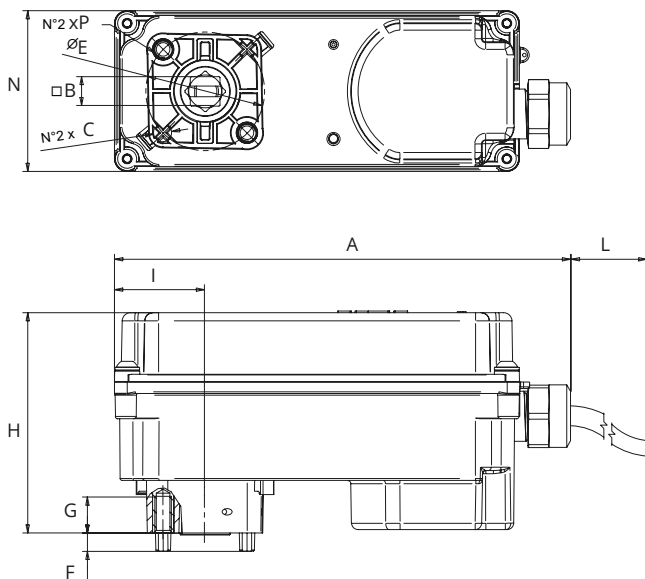
HOW TO ORDER:

POWER SUPPLY	CONTROL TYPE	OPERATING TIME 90°	POWER CONSUMPTION	CODE		UL APPROVAL
				with 2 Motor-voltage Switches	with 2 Free Auxiliary Switches	
220 - 240V AC	2 wires	15/20 sec*	8W	-	CP08A2K00100	-
220 - 240V AC	3 wires	15/20 sec*	8W	-	CP08A3K00100	-
110 - 120V AC	2 wires	15/20 sec*	8W	-	CP08B2K00100	-
110 - 120V AC	3 wires	15/20 sec*	8W	-	CP08B3K00100	-
24V AC	2 wires	15/20 sec*	8W	-	CP08C2K00100	-
24V AC	3 wires	15/20 sec*	8W	-	CP08C3K00100	-
24V DC	2 wires	3 sec	5.5W	CP08D2J00200	CP08D2K00200	•
24V DC	3 wires	3 sec	5.5W	CP08D3J00200	CP08D3K00200	•
24V AC DC	2 wires	3 sec	5.5W	-	CP08E2K00300	-
24V AC DC	3 wires	3 sec	5.5W	-	CP08E3K00300	-
12V DC	2 wires	3 sec	5.5W	CP08F2J00200	CP08F2K00200	-
12V DC	3 wires	3 sec	5.5W	CP08F3J00200	CP08F3K00200	-
3.5 - 12V DC	2 wires	3 sec	5.5W	-	CP08G2K00200	-
3.5 - 12V DC	3 wires	3 sec	5.5W	-	CP08G3K00200	-

*AC 50Hz: 20 sec; AC 60Hz: 15 sec

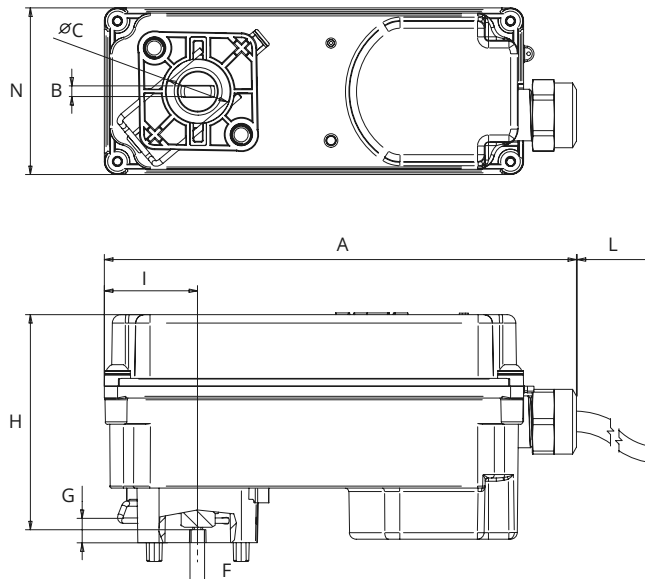


FLANGE ISO 5211 F03



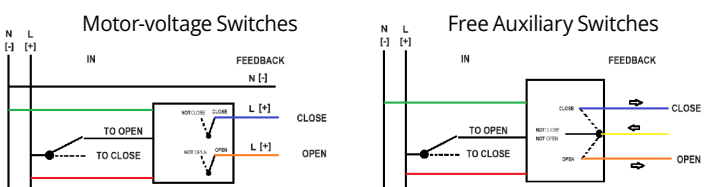
	Size mm	Size inch
A	138.5	5.45
L	~800	~31.50
I	27.5	1.08
H	67	2.64
G	11	0.43
F	5.5	0.22
N	49	1.93
Square B	9	0.35
ØC	5.5	0.22
ØE	36	1.42
P	M5	M5

S.31

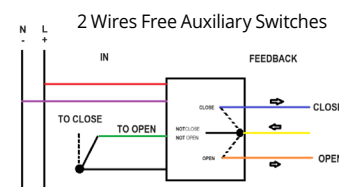


	Size mm	Size inch
A	138.5	5.45
L	~800	~31.50
I	27.5	1.08
H	63.2	2.49
G	7.3	0.29
F	4.3	0.17
N	49	1.93
B	3.18	0.13
ØC	18.7	0.74

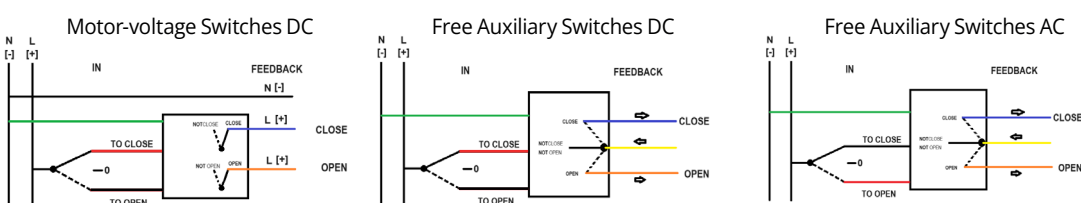
WIRING DIAGRAM FOR 2 WIRES CONTROL - V AC / V DC MODEL



WIRING DIAGRAM FOR 2 AND 3 WIRES CONTROL - V AC-DC MODEL

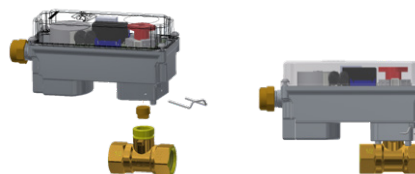


WIRING DIAGRAM FOR 3 WIRES CONTROL - V AC / V DC MODEL



CP8 VALVES COMBINATIONS

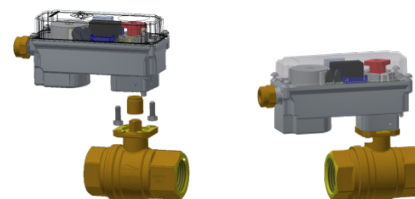
Simple assembly operation
DUAL ACTUATOR-VALVE INTERFACE



QUICK CONNECT
MOUNTING KIT TO BE ORDERED SEPARATELY "KCPA0AA00100"



S.31	ΔP	1/4" AV31BF3	3/8" AV31CF3	1/2" AV31DF3	3/4" AV31EF3
	0 ÷ 16 Bar (0 ÷ 232 PSI)	•	•	•	•



INTEGRATED ISO 5211 FLANGE
MOUNTING KIT INCLUDED



S.64 Low Torque	ΔP	1/2" S64DxxA	3/4" S64ExxA	1" S64FxxA	1 1/4" S64GxxA
	0 ÷ 6 Bar (0 ÷ 87 PSI)	-	-	•	•
	6 ÷ 16 Bar (87 ÷ 232 PSI)	-	-	•	•



S.64 K.64	ΔP	1/2" S64Dxx	3/4" S64Exx	1" S64Fxx	1 1/4" S64Gxx
	0 ÷ 15 Bar (0 ÷ 217 PSI)	•	•	•	-
	15 ÷ 40 Bar (217 ÷ 580 PSI)	•	•	•	-



S.65	ΔP	1/2" S65Dxx	3/4" S65Exx	1" S65Fxx	1 1/4" S65Gxx
	0 ÷ 16 Bar (0 ÷ 232 PSI)	•	•	•	•



S.76	ΔP	1/2" S76Dxx	3/4" S76Exx	1" S76Fxx	1 1/4" S76Gxx
	0 ÷ 16 Bar (0 ÷ 232 PSI)	•	•	•	-

