



# s.131 NPT stainless steel

Female/Female

1/4" - 2"

1000 PSI, reduced port



EAC

## QUALITY

- Dual sealing system allows valve to be operated in either direction making installation easier
- Handle clearly shows ball position
- Silicone-free lubricant on all seals
- Test standard API 598
- NACE compliance MR-01-75
- Handle stops on body to avoid stress at stem

## BODY

- CF8M stainless steel body

## STEM

- Blowout-proof stainless steel stem

## SEALING

- PTFE seats

## THREADS

- NPT taper ANSI B.1.20.1 female by female threads

## HANDLE

- Plastic coated stainless steel lockable handle. Handle coating offers both thermal and electrical protection
- **WARNING:** do not exceed reasonable temperature and/or electrical load

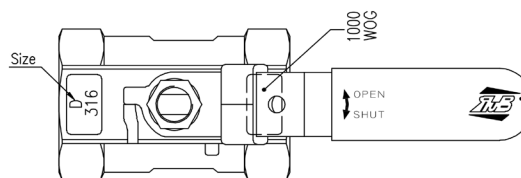
## WORKING PRESSURE & TEMPERATURE

- 1000 PSI (70 bar) non-shock cold working pressure
- 150 PSI (10 bar) WSP steam rating
- $2 \times 10^{-2}$  torr vacuum rating
- \*150 psig non-shock working steam pressure. Not suitable for throttling steam.
- -50°F to +400°F (-45.5°C to +205°C)
- **WARNING:** freezing of the fluid in the installation may severely damage the valve

## APPROVED BY OR IN COMPLIANCE WITH

- EAC – Declaration of conformity (Russia, Kazakhstan, Belarus)

**NOTE:** approvals apply to specific configurations/sizes only.



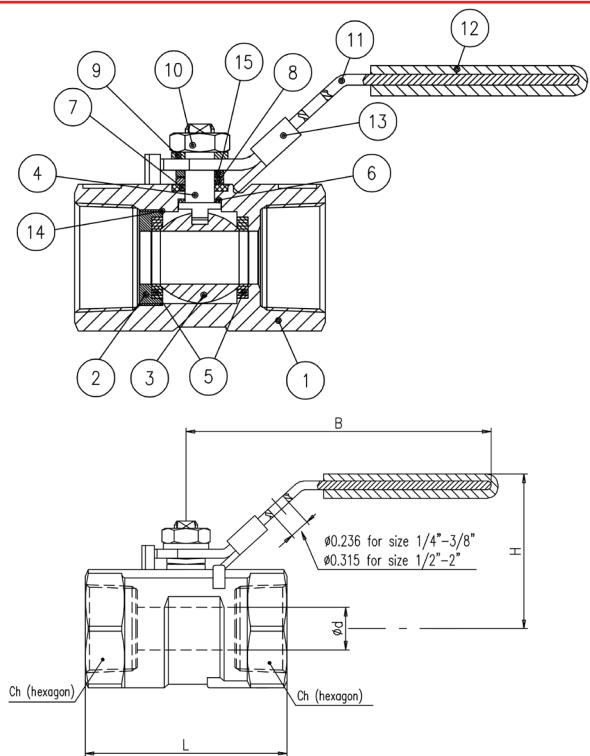
## s.131 NPT XCE131 - 5813

Each user should perform his own tests to find out the suitability for his particular application. RuB, Inc makes no warranty, express or implied, as to the shape, fit or function of a product for any application. Contact us or consult with your supplier for additional information on the suitability of the RuB, Inc products with your specific field of use.



INDUSTRY

	Part description	Q.ty	Material
1	Body	1	A351-CF8M
2	Insert	1	AISI316
3	Ball	1	AISI 316 or A351-CF8M
4	Stem	1	A276 Gr. 316
5	Seat	2	PTFE
6	Thrust washer	1	PTFE
7	Packing	1	PTFE
8	Washer	1	A240 SS304
9	Lock washer	1	A493 SS304
10	Stem nut	1	A194 Gr.8
11	Lockable handle	1	A240 SS304
12	Handle sleeve	1	Vinyl grip
13	Locking plate	1	A240 SS304
14	Gasket	1	PTFE - Only 1 1/4" - 2"
15	Concave washer	1	SS301

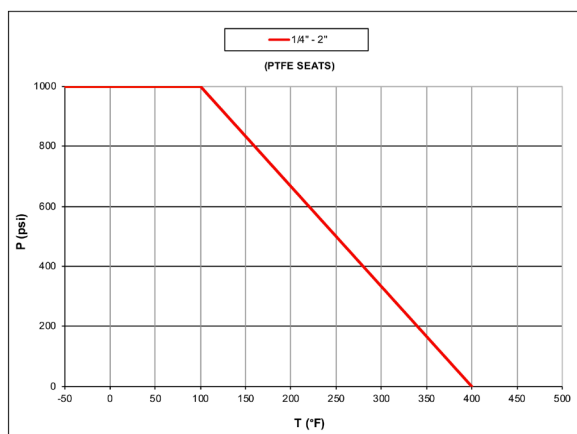


Code	131B41	131C41	131D41	131E41	131F41	131G41	131H41	131I41
D (Size)	1/4"	3/8"	1/2"	3/4"	1"	1 1/4"	1 1/2"	2"
d (inch)	0.197	0.276	0.362	0.492	0.591	0.787	0.965	1.26
L (inch)	1.535	1.732	2.205	2.323	2.795	3.11	3.268	3.937
H (inch)	1.37	1.39	1.807	1.846	1.862	2.189	2.28	2.547
B (inch)	2.756	3.11	3.661	3.622	4.409	4.409	5.315	5.315
Ch (inch)	0.669	0.827	0.984	1.26	1.496	1.929	2.087	2.559
Cv (GPM)	2	6	7	14	23	36	56	92

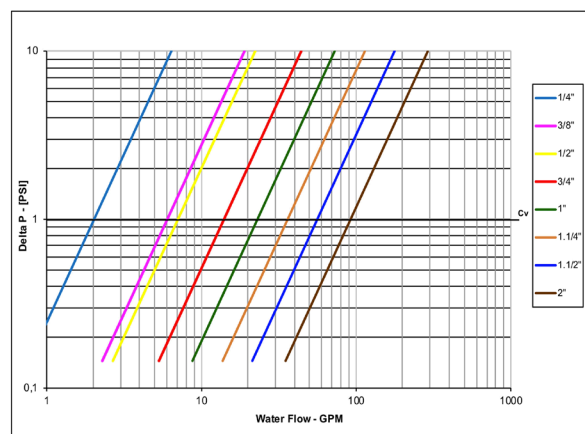
### WATER FLOW RATINGS

Size	1/4"	3/8"	1/2"	3/4"	1"	1 1/4"	1 1/2"	2"
CV	2	6	7	14	23	36	56	92

### PRESSURE-TEMPERATURE CHART



### PRESSURE DROP CHART



**WARNING:** This product can expose you to chemicals including lead which is known to the state of California to cause cancer and birth defects or other reproductive harm. For more information go to [www.P65Warnings.ca.gov](http://www.P65Warnings.ca.gov)

RuB, Inc. - [www.rubinc.com](http://www.rubinc.com)