



s.7241L NPT

3-way, lever, 4 seats (diverting)

Female/Female/Female
1/2" - 1"

The RuB S.7241L is the right choice for fluid diversion and is designed with robust maintenance-free components ensuring ease of operation and safety. With a simple 90° turn of the handle, you can divert flow from one downstream outlet to the other. It combines traditional manual operation with modern automation.

It is also very easy to convert from its sturdy lever handle to ISO 5211 actuator flange assembly.

The valve can be purchased separately, with handle or with a RuB actuator already mounted.



QUALITY

- Electronic 100% seal test guaranteed for maximum safety
- No metal-to-metal moving parts
- No maintenance ever required
- Silicone-free lubricant on all seals
- Chrome plated brass ball for longer life
- Each valve is seal tested for maximum safety
- Performs well in any orientation
- Strong configuration

BODY

- Hot forged sand blasted, external nickel plated brass body and cap sealed with Loctite® or equivalent thread sealant
- Integrated ISO5211 / DIN3337 mounting flange for universal connection to actuator
- Finest brass according to EN 12165 and EN 12164 specifications
- 3-way L-port design for flow diversion

STEM

- Blowout-proof nickel plated brass stem
- Maintenance-free, double FPM O-rings at the stem for maximum safety

SEALING

- Pure PTFE self-lubricating seats with flexible-lip design
- Four seats design for mixing of various fluids in the system

THREADS

- NPT taper ANSI B.1.20.1 female by female threads

FLOW

- 100% full port for maximum flow

OPTIONS

- Rack and pinion pneumatic actuator (spring return or double acting)
- S.7241 without handle, actuator ready
- Various actuator linkage kit

HANDLE

- Geomet® carbon steel handle with thick PVC dip coating. Handle coating offers both thermal and electrical protection
- Handle removable with valve in service
- **WARNING:** do not exceed reasonable temperature and/or electrical load

WORKING PRESSURE & TEMPERATURE

- 300 PSI (20 bar) non-shock cold working pressure
- -4°F to +302°F (-20°C to +150°C)
- **WARNING:** freezing of the fluid in the installation may severely damage the valve

UPON REQUEST

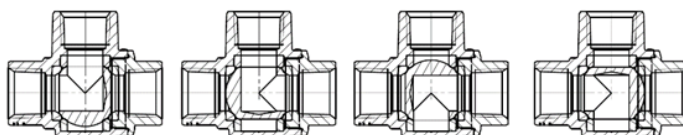
- Custom design
- Stainless steel stem (1.4401/ AISI 316)
- Configurations with 4 seats & T-port (s.7341L) or 2 seats & L-port (s.7641L)

APPROVED BY OR IN COMPLIANCE WITH

- RoHS Compliant (EU)
- EAC – Declaration of conformity (Russia, Kazakhstan, Belarus)

NOTE: approvals apply to specific configurations/sizes only.

S.72 3-WAY "L" PORT OPERATING POSITIONS



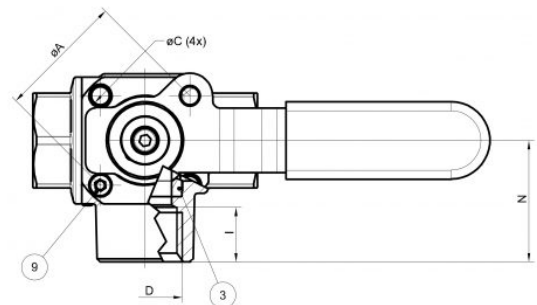
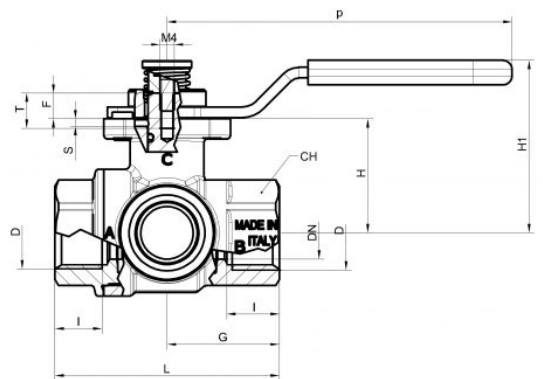
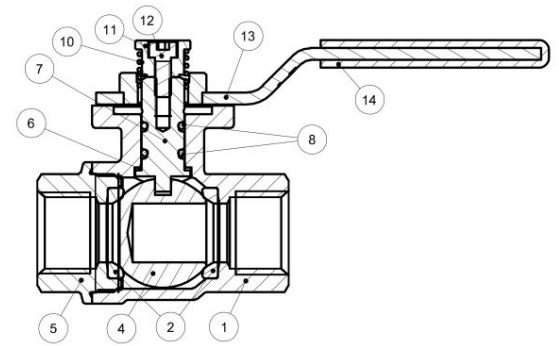
s.7241L NPT XCES7241L - 5813

Each user should perform his own tests to find out the suitability for his particular application. RuB, Inc makes no warranty, express or implied, as to the shape, fit or function of a product for any application. Contact us or consult with your supplier for additional information on the suitability of the RuB, Inc products with your specific field of use.



Part description		Q.ty	Material
1	Sand blasted unplated body	1	CW617N
2	Seat	2	PTFE
3	Seat	2	PTFE
4	Chrome plated ball	1	CW617N
5	Sand blasted unplated end-cap	1	CW617N
6	Washer	1	PTFE carbon filled 25%
7	Nickel plated stem O-ring design	1	CW617N
8	O-Ring	2	FPM
9	Screw handle stop	1	CW617N
10	Black dipped coating	1	1.4310 / AISI302
11	Stainless steel screw	1	CW617N
12	Unplated stop	1	1.4301 / AISI304
13	Zinc plated steel nut	1	DD11 (EN10111)
14	Stainless steel Exagonal screw	1	PVC

Code	S72D41L	S72E41L	S72F41L
Size (inch)	1/2"	3/4"	1"
DN (inch)	0.591	0.787	0.984
I (inch)	0.610	0.709	0.827
L (inch)	2.559	3.110	3.642
G (inch)	1.280	1.555	1.831
H (inch)	1.280	1.555	1.673
N (inch)	1.358	1.654	1.949
ØA (inch)	1.417	1.417	1.417
ØC (inch)	Ø 0.205 (M6)	Ø 0.205 (M6)	Ø 0.205 (M6)
p (inch)	3.937	3.937	3.937
H1 (inch)	1.929	2.210	2.328
S (inch)	0.087	0.087	0.087
T (inch)	0.394	0.394	0.394
F (inch)	0.287	0.327	0.327
CH (inch)	1.063	1.260	1.614
Flange connection DIN ISO 522 DIN 3337	F03	F03	F03



TORQUE FOR ACTUATOR SIZING LB-IN

Delta P -->	0÷230 PSI	
	to open	to close
1/2"	93	93
3/4"	115	115
1"	261	261

TORQUE CORRECTION FACTORS

Valve torque can vary according to operating frequency, temperature and friction characteristics of the media.

If media has more or less friction than water, multiply torque by the following factors:

Lubricating oils or liquids	0.8
Dry gases, natural gas	1.5
Slurries or liquids bearing abrasive particles	1.5÷2.5